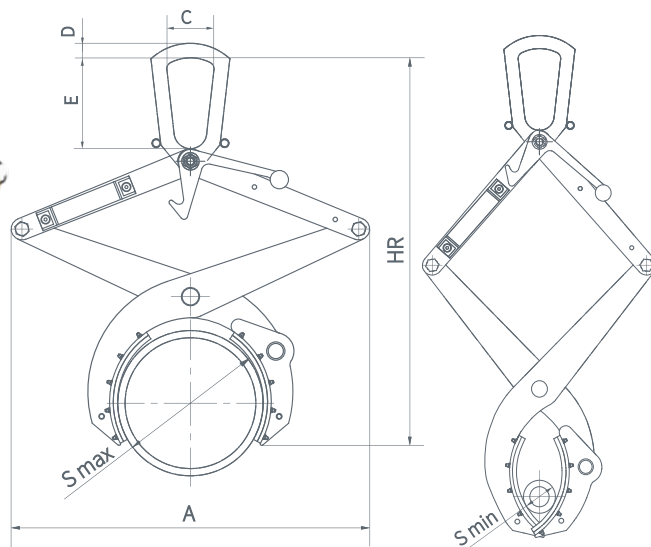
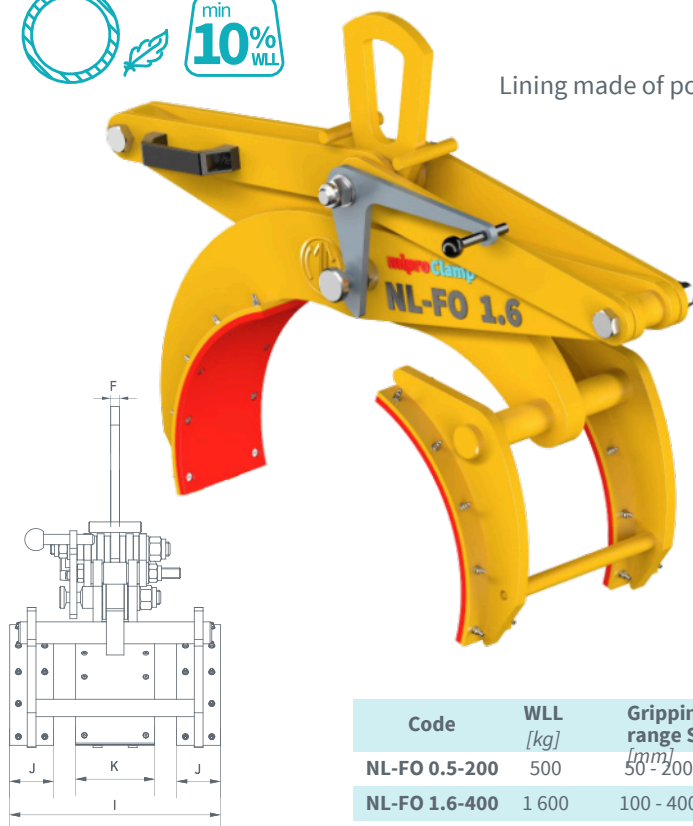


NL-FO Round profile clamp with lining



CE Declaration of conformity
2006/42/EC manufactured according to Directive
EN 13155 meets the Standard
-20 +60°C working temperature
16 000 max. working cycles
strength test 100% according to PN-EN 13155
Made in EU

Lining made of polyurethane



Code	WLL [kg]	Gripping range S [mm]	HR	Dimensions [mm]								Mass [kg]
NL-FO 0.5-200	500	50 - 200	534 - 747	358 - 494	65	20	125	10	50	90	240	15,5
NL-FO 1.6-400	1 600	100 - 400	869 - 1207	585 - 796	65	28	125	15	75	130	310	65

NL-G Steel sheet pile clamp

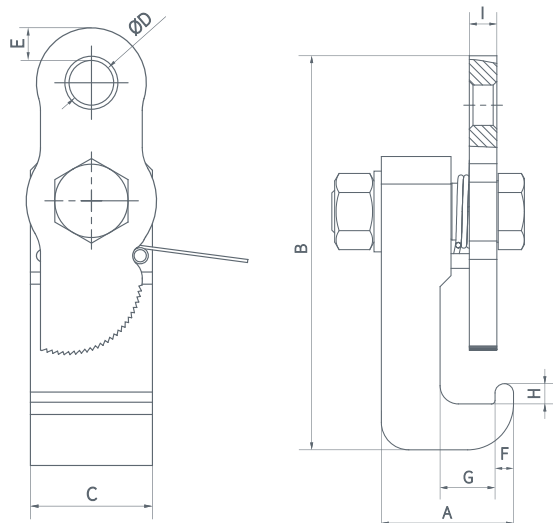


CE Declaration of conformity
2006/42/EC manufactured according to Directive
EN 13155 meets the Standard
-20 +100°C working temperature
16 000 max. working cycles
strength test 100% according to PN-EN 13155
Made in EU
24h IN STOCK Program



The clamps are equipped with a pressure spring that allows pre-fixation of the handle on the edge of the sheet pile

The clamps are designed to work in pairs



Code	WLL [kg]	Dimensions [mm]								Mass [kg]
NL-G 1.4 R	1 400	72	215	60	22	16	10	30	15	3,7
NL-G 1.4 L	1 400	72	215	60	22	16	10	30	15	3,7

- NL-G 1,4 R – right hand
- NL-G 1,4 L – left hand