

NL-Y I-beam holder



Declaration of conformity

2006/42/EC manufactured according to Directive

EN 13155 meets the Standard

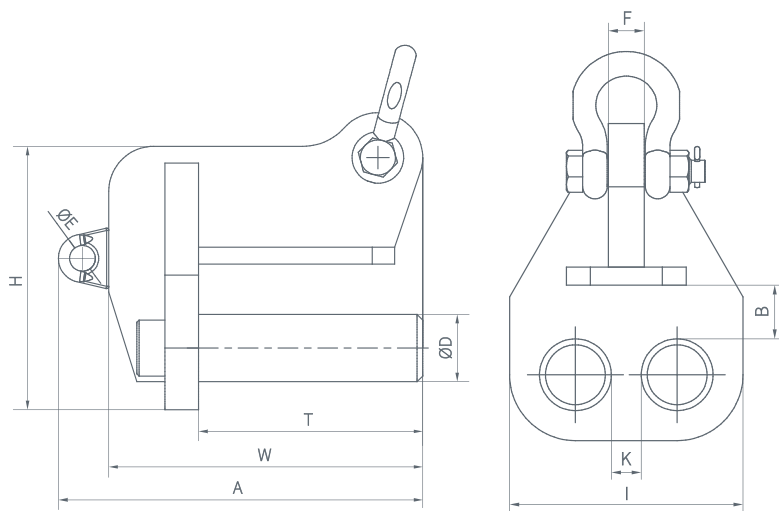
-20 +100°C working temperature

16 000 max. working cycles

100% strength test according to PN-EN 13155

Made in EU

- The capacity of the handle 5 000 kg applies to one handle
- The handles are designed to work in pairs



Code	WLL [kg]	Dimensions [mm]										Mass [kg]
NL-Y 5.0	5 000	A	W	T	ØE	ØD	H	I	K	B	F	
		000	325	280	200	23	60	235	195	25	45	280

NL-Z I-beam clamp



Declaration of conformity

2006/42/EC manufactured according to Directive

EN 13155 meets the Standard

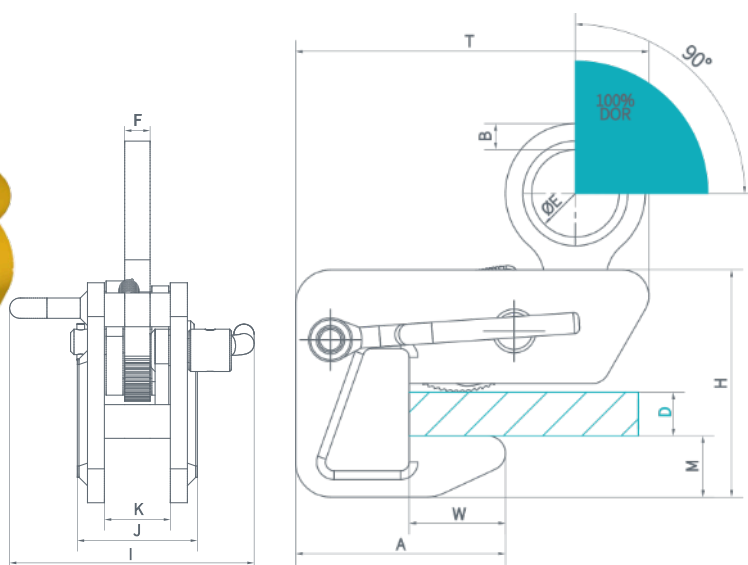
-20 +100°C working temperature

16 000 max. working cycles

100% strength test according to PN-EN 13155

Made in EU

- The capacity of the handle 1 000 kg applies to one handle
- The handles are designed to work in pairs



Code	WLL [kg]	Gripping range D [mm]	Dimensions [mm]										Mass [kg]
NL-Z 1.0	1 000	0 - 25	A	W	T	ØE	H	M	B	I	J	K	F
			120	55	202	50	130	35	15	144,5	71	39	15